

Interactive Dashboards

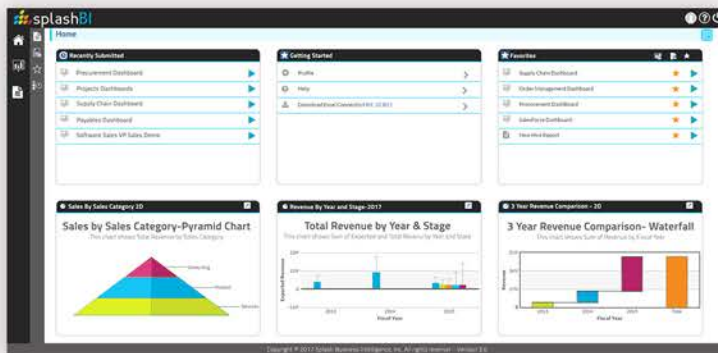
For your **FREE** trial
Visit splashbi.com

Dashboards Overview

Dashboards are a key management tool that allow users to track metrics, trends, KPIs, and other key data points in order to improve analysis and decision making. SplashBI believes this shouldn't have to be an overly complex process only used by data scientists. We have added many features and functionalities that are easy to learn and utilize in order to produce informative dashboards.

Features

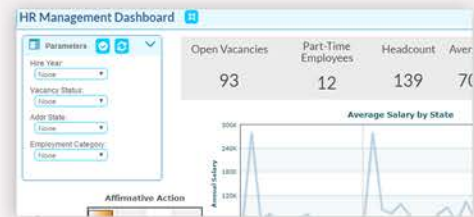
- 100+ Visualizations
- Access Anywhere
- Connectors
- Drill Downs
- Automatic Refresh
- Distribution
- Scheduling
- Multiple Tabs



Up & Running

Once dashboards have been saved, they can be shared with other users who also need to utilize the information. Depending on security setups, you can also allow other users to make copies of dashboards to customize them to their own needs!

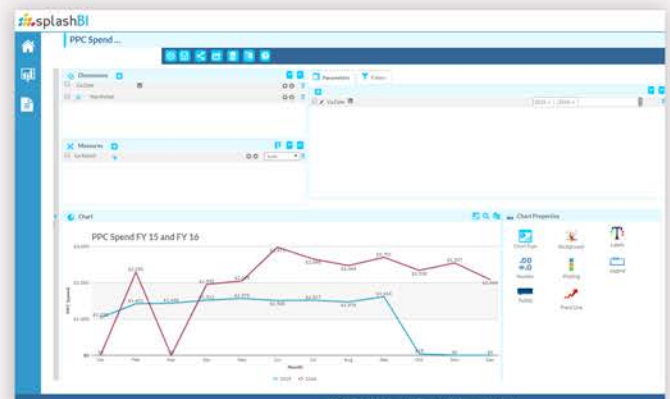
When viewing a dashboard, users have many options to customize the data that they are looking at. They can use drop downs in the parameters section to add additional criteria to all the graphs, or even click and modify a single chart.



Charts & Graphs

Charts are the backbone of any dashboard. From visualizations as simple as a KPI to as complex as a bubble chart, SplashBI allows users to easily personalize their charts to match the overall theme of the dashboard they are working to create.

Easily drag and drop your dimensions and measures and even add parameters and filters. SplashBI's intuitive design will automatically start your graph for you, and will provide a list of additional graph types that can be selected based on the criteria entered.



Building your Dashboard

Once you have created your charts, turning them into a meaningful dashboard is simple. As with most screens in SplashBI, users will drag and drop the charts they want to add and manage the arrangement, sizing and order to reflect their purpose.

