

# Report in Excel

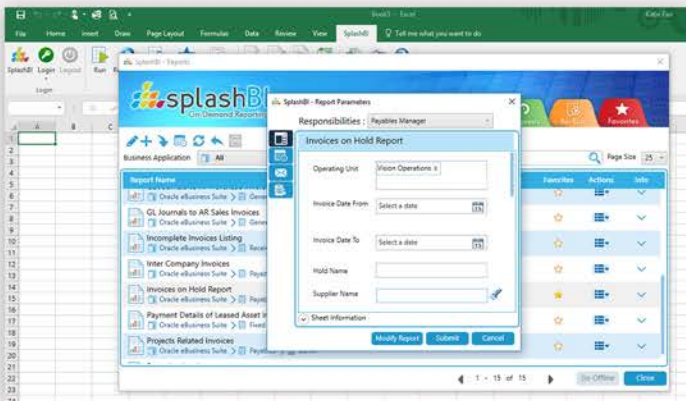
For your **FREE** trial  
Visit **splashbi.com**

## Excel Connect Overview

For many users, the most commonly used output format for reporting is Excel. This is where the analyzing, reconciling, and more take place. So why not run your reports directly in Excel? With most other BI solutions, this isn't an option. SplashBI provides an Add-In for Excel that allows you to do just that!

With SplashBI's Excel Connect, users can run reports, format them, analyze the data, and add pivots or graphs. Easily refresh your reports as often as needed and retain all of the formatting, so there is no need to recreate the effort!

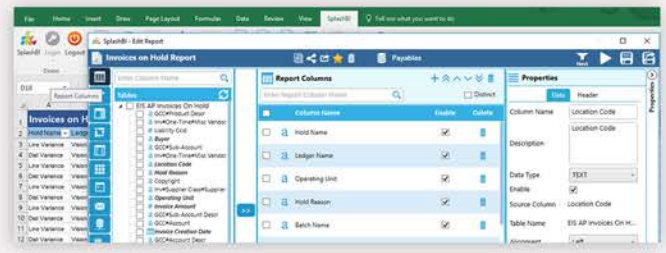
- User friendly and easy to learn
- Fully functional reporting tool
- Role and user based security options
- Easy to install on desktops
- Continue to use Excel's full breadth of functionality



## Ad Hoc When You Need It

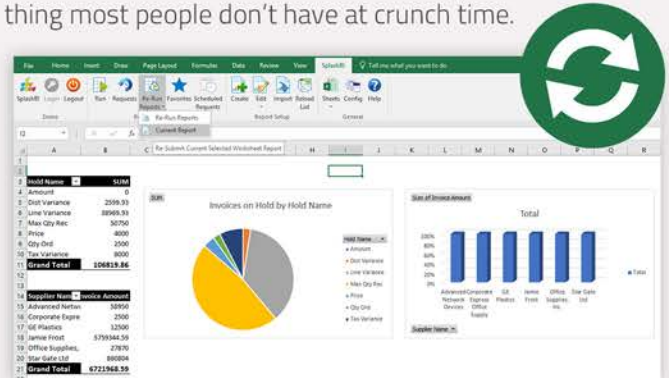
For most users, making a change to one of their reports can be quite an undertaking. Whether it is submitting an IT request or waiting for time from a developer, not receiving instant gratification can be extremely frustrating and cause a drop in productivity. SplashBI is designed to allow USERS to ad hoc reports themselves without the intervention of IT. (Don't worry IT folks, you can still control access with security options)

- Add, remove, and reorder columns
- Change fonts, colors, and formats
- Change column properties
- Aggregate data with sums, averages, counts, and more
- Set up distributions
- Modify and add new pivot tables



## Don't Recreate the Wheel

One of Excel Connect's most popular features is its ability to refresh reports as often as needed. This allows the user to build formulas, pivots, graphs, and formats around their reports, and then refresh the data when necessary. No need to recreate the effort every time the report is run. It can save hours of manual efforts, which is something most people don't have at crunch time.



## Full of Features

Excel Connect is more than just a way to run your reports in Excel... it is a game changer for reporting! With features designed to increase your reporting efficiency, you can turn hours of work into minutes. Features Include:

- Scheduling
- Ad hoc functionality
- Create new reports
- Distribution
- Templates
- Drill downs

